

**380 ... 427 MHz**

**360 ... 380 MHz**

**445 ... 470 MHz**

Helicoidal structure with TNC connector.

## MAIN CHARACTERISTICS

Frequency range	: 380 - 427 MHz (TTRP3)
Frequency range	: 360 - 380 MHz (TTRP3A)
Frequency range	: 445 - 470 MHz (TTRP3B)
Input impedance	: 50 ohm
V.S.W.R.	: 1:2.5
Maximum rated RF power	: 25 watt
Polarization	: Vertical
Gain	: -1 dBd
Protection material	: EPDM 80 SH rubber
Insulator material	: Acetal copolymer ZELLAMID 900
Working temperature	: From -20° to +55°
Length	: 112 +/- 4 mm

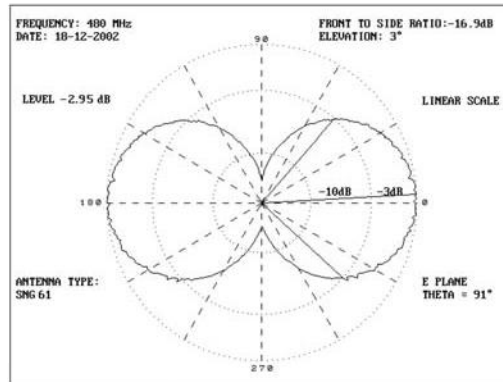


**SNG SERIES**

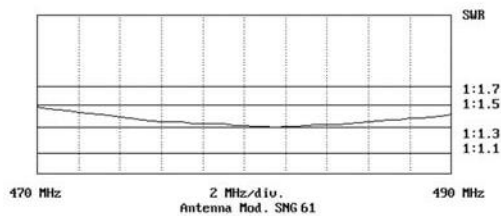
**MAIN CHARACTERISTICS**

Model : SNG 61  
 Center Frequency : 480 MHz  
 SWR : 1:1.3  
 Absolute gain : -9.25 dB over 1/4 wave whip  
 Beam width : 91°  
 Beam tilt : 3°  
 Physical length : 61 mm

**RADIATION PATTERN**



**SWR DIAGRAM**

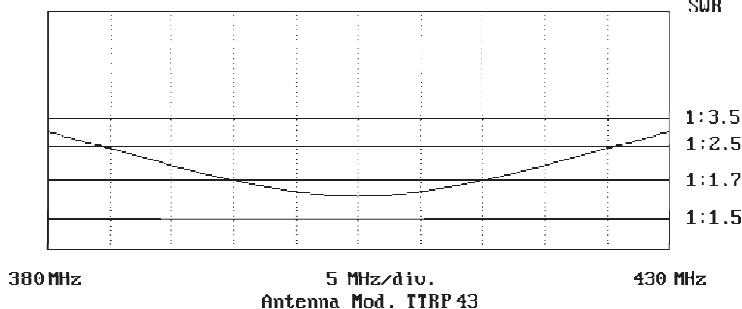


**CAT SERIES**

**MAIN CHARACTERISTICS**

Model : TTRP 405  
 Type : Shorted 1/4 wave  
 Frequency : 380 - 430 MHz  
 Nominal impedance : 50 ohm  
 Swr : <1:3.5  
 Polarization : Vertical  
 Max power : 20 watt  
 Material : EPDM 70 SH  
 Connector : Custom  
 Body height : 56.6 mm  
 Total height : 66.4 mm

**SWR**

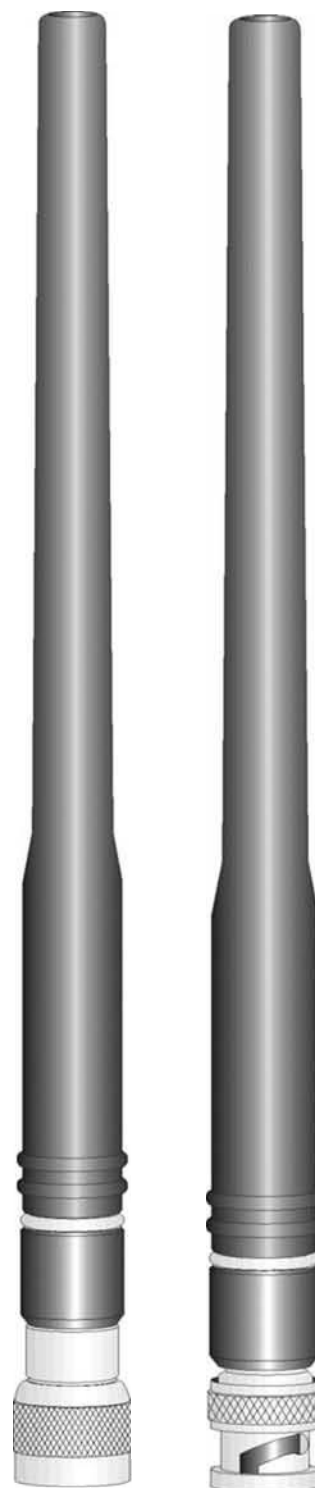


Helicoidal structure with TNC or BNC connector.

**MAIN CHARACTERISTICS**

- Input impedance : 50 ohm
- V.S.W.R. : 1:2
- Maximum rated RF power : 100 watt
- Polarization : Vertical
- Gain : See table
- Protection material : EPDM 80 SH rubber
- Insulator material : Acetal copolymer ZELLAMID 900
- Working temperature : From -35° to +80°
- Dimensions : 15 x 200 mm
- Net weight : abt. 60 g

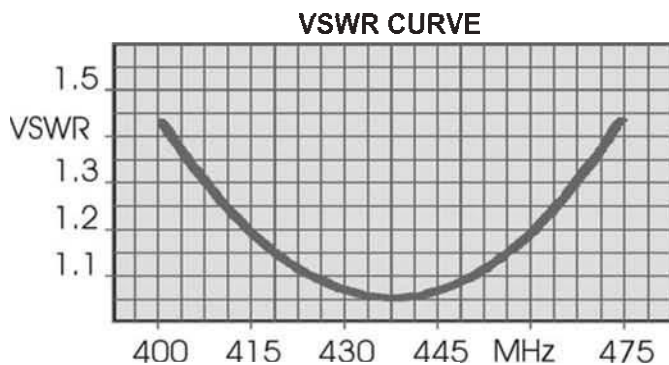
Mod.	Mod.	Frequency range	Gain
PRT 27 / PRB 27		27 MHz	- 4 dB over 1/4 whip
PRT 43 / PRB 43		43 MHz	- 3 dB over 1/4 whip
PRT 68 / PRB 68		68 ... 72 MHz	- 2 dB over 1/4 whip
PRT 72 / PRB 72		72 ... 76 MHz	- 2 dB over 1/4 whip
PRT 76 / PRB 76		76 ... 80 MHz	- 2 dB over 1/4 whip
PRT 140 / PRB 140		140 ... 150 MHz	- 1 dB over 1/4 whip
PRT 150 / PRB 150		150 ... 160 MHz	- 1 dB over 1/4 whip
PRT 160 / PRB 160		160 ... 170 MHz	- 1 dB over 1/4 whip
PRT 400 / PRB 400		400 ... 470 MHz	- 1 dB over 1/4 whip
PRT-DB / PRB-DB		144 / 432 MHz	- 1 dB over 1/4 whip



Heavy duty silver plated spring wound,  
helical antenna for portable equipment.  
Very high flexibility, wear resistant.

### MAIN CHARACTERISTICS

Frequency range	: 400 - 470 MHz
Input impedance	: 50 ohm
V.S.W.R.	: < 1.5:1 according to CEPT T/R 2401
Maximum rated RF power	: 25 watt
Polarization	: Vertical
Gain	: - 2 dBd over 1/4 whip
Type of connection	: BNC male or TNC male
Protection material	: Heat - shrinkable elastomeric tubing
Insulator material	: Polyethylene
Fatigue test	: Over 30.000 flexions
Net weight	: 35 g
Length	: 210 mm
Working temperature	: From -35° to +80°



**WIDEBAND  
HELICAL ANTENNA  
415 ... 470 MHz**

Heavy duty silver plated spring wound,  
helical antenna for portable equipment.  
Very high flexibility, wear resistant.

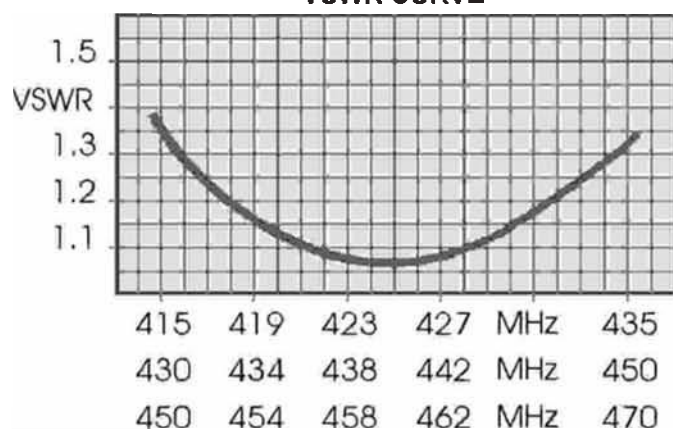
**R-P 020 BQ & TQ  
R-P 020 BR & TR  
R-P 020 BZ & TZ**

**MAIN CHARACTERISTICS**

Frequency range	: 415 - 435 MHz	<b>R-P020BQ &amp; R-P020TQ</b>
	: 430 - 450 MHz	<b>R-P020BR &amp; R-P020TR</b>
	: 450 - 470 MHz	<b>R-P020BZ &amp; R-P020TZ</b>
Input impedance	: 50 ohm	
V.S.W.R.	: < 1:1,5 according to CEPT T/R 2401	
Maximum rated RF power	: 25 watt	
Polarization	: Vertical	
Gain	: > - 2 dBd	
Type of connection	: BNC male or TNC male	
Protection material	: Heat - shrinkable elastomeric tubing	
Insulator material	: Polyethylene	
Fatigue test	: Over 50.000 flexions	
Net weight	: 24 g	
Length	: 100 mm	
Working temperature	: From -35° to +80°	



**VSWR CURVE**



**R-P020BQ & R-P020TQ  
R-P020BR & R-P020TR  
R-P020BZ & R-P020TZ**

**430 ... 450 MHz**

Heavy duty silver plated spring wound,  
helical antenna for portable equipment.  
Very high flexibility, wear resistant.

**MAIN CHARACTERISTICS**

Frequency range	: 430 - 450 MHz
Input impedance	: 50 ohm
V.S.W.R.	: < 1:1.5 according to CEPT T/R 2401
Maximum rated RF power	: 25 watt
Polarization	: Vertical
Gain	: 4 dBd
Type f connection	: BNC male
Protection material	: Heat - shrinkable elastomeric tubing
Insulator material	: Polyethylene
Fatigue test	: Over 30.000 flexions
Net weight	: 45 g
Length	: 395 mm
Working temperature	: From -35° to +80°



**VSWR CURVE**

