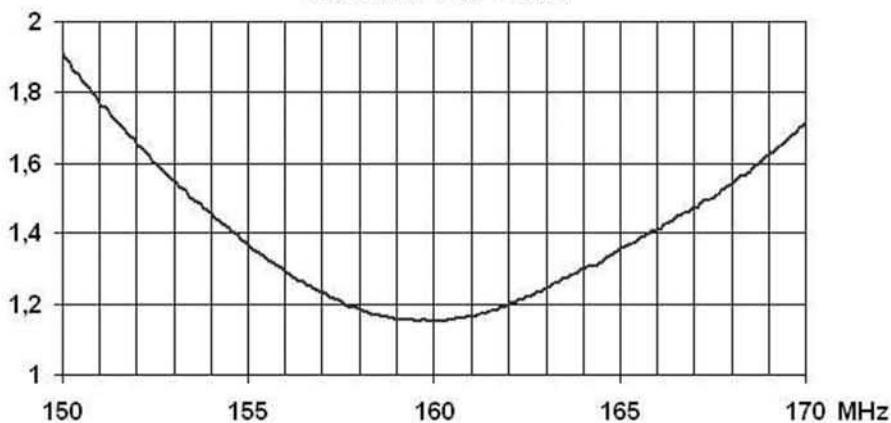


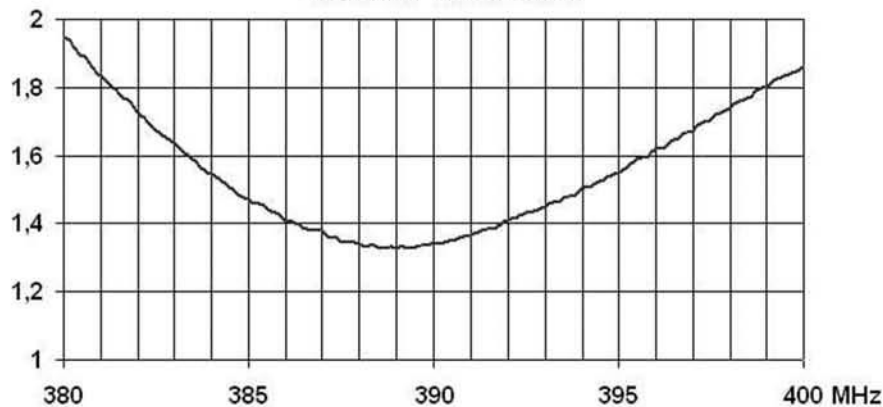
MAIN CHARACTERISTICS

Type	: 1/4
Frequency range	: 150 - 170 MHz
	: 380 - 400 MHz
Input impedance	: 50 ohm
V.S.W.R.	: < 1:2
Maximum rated RF power	: 200 watt
Polarization	: Vertical
Gain	: 0 dBd (2.13 dBi)
Type of connection	: TNC 90°
Whip material	: Fiberglass
Spring material	: Inox steel
Mounting hole	: 24 mm
Length	: 445 mm
Working temperature	: From -40° to + 60°
Wind resistance	: 180 Km/h

V.S.W.R. VHF Band



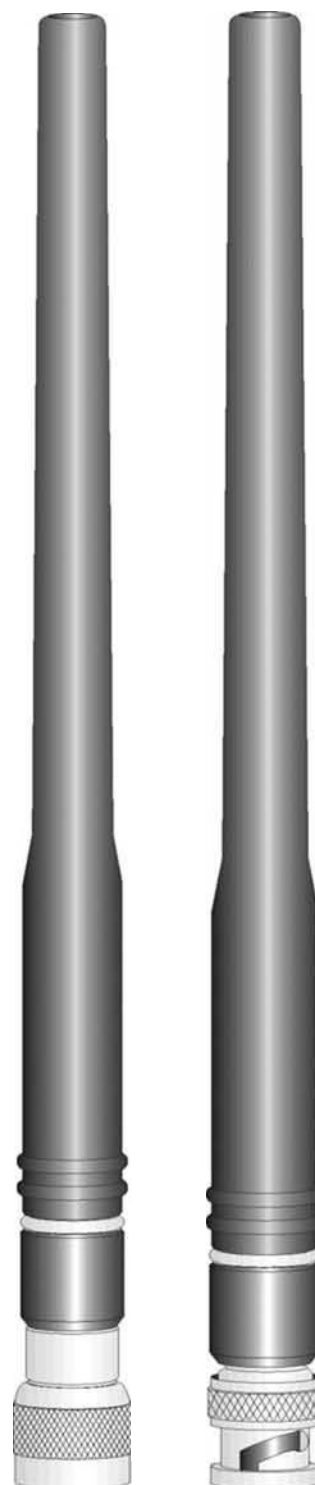
V.S.W.R. Tetra Band



MAIN CHARACTERISTICS

Input impedance	: 50 ohm
V.S.W.R.	: 1:2
Maximum rated RF power	: 100 watt
Polarization	: Vertical
Gain	: See table
Protection material	: EPDM 80 SH rubber
Insulator material	: Acetal copolymer ZELLAMID 900
Working temperature	: From -35° to +80°
Dimensions	: 15 x 200 mm
Net weight	: abt. 60 g

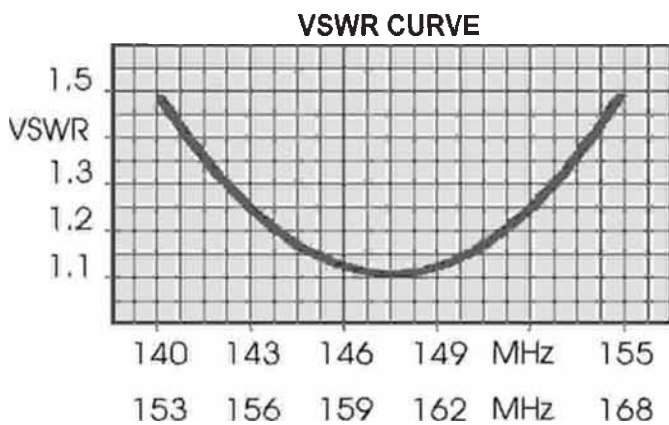
Mod.	Mod.	Frequency range	Gain
PRT 27 / PRB 27		27 MHz	- 4 dB over 1/4 whip
PRT 43 / PRB 43		43 MHz	- 3 dB over 1/4 whip
PRT 68 / PRB 68		68 ... 72 MHz	- 2 dB over 1/4 whip
PRT 72 / PRB 72		72 ... 76 MHz	- 2 dB over 1/4 whip
PRT 76 / PRB 76		76 ... 80 MHz	- 2 dB over 1/4 whip
PRT 140 / PRB 140		140 ... 150 MHz	- 1 dB over 1/4 whip
PRT 150 / PRB 150		150 ... 160 MHz	- 1 dB over 1/4 whip
PRT 160 / PRB 160		160 ... 170 MHz	- 1 dB over 1/4 whip
PRT 400 / PRB 400		400 ... 470 MHz	- 1 dB over 1/4 whip
PRT-DB / PRB-DB		144 / 432 MHz	- 1 dB over 1/4 whip



Heavy duty silver plated spring wound,
helical antenna for portable equipment.
Very high flexibility, wear resistant.

MAIN CHARACTERISTICS

Frequency range	: 140 - 154 MHz	R-P024BG & TG
	: 154 - 168 MHz	R-P024BH & TH
Input impedance	: 50 ohm	
V.S.W.R.	: < 1.5:1 according to CEPT T/R 2401	
Maximum rated RF power	: 25 watt	
Polarization	: Vertical	
Gain	: - 2 dBd over 1/4 whip	
Type of connection	: BNC male (on BG - BH) or TNC male on (BH - TH)	
Protection material	: Heat - shrinkable elastomeric tubing	
Insulator material	: Polyethylene	
Fatigue test	: Over 50.000 flexions	
Net weight	: 40 g	
Length	: 175 mm	
Working temperature	: From -35° to +80°	



R-P024BG & R-P024TG

R-P024BH & R-P024TH

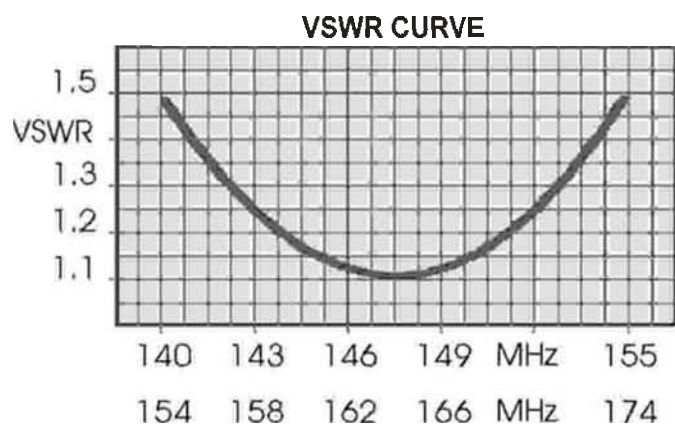
**WIDEBAND
WHIP ANTENNA
140 ... 174 MHz**

Heavy duty silver plated spring wound,
helical antenna for portable equipment.
Very high flexibility, wear resistant.

**R-P 151 BG & TG
R-P 151 BH & TH
R-P 151 UH**

MAIN CHARACTERISTICS

Frequency range	: 140 - 155 MHz	R-P151BG & TG
	: 154 - 174 MHz	R-P151BH & TH & UH
Input impedance	: 50 ohm	
V.S.W.R.	: < 1.5:1 according to CEPT T/R 2401	
Maximum rated RF power	: 25 watt	
Polarization	: Vertical	
Gain	: - 2 dBd over 1/4 whip	
Type of connection	: BNC male or TNC male or UHF male	
Protection material	: Heat - shrinkable elastomeric tubing	
Insulator material	: Polyethylene	
Fatigue test	: Over 30.000 flexions	
Net weight	: 55 g	
Length	: 495 mm	R-P151BG & TG
	: 440 mm	R-P151BH & TH & UH
Working temperature	: From -35° to +80°	



R-P151BG & R-P151TG

R-P151BH & R-P151TH & R-P151UH

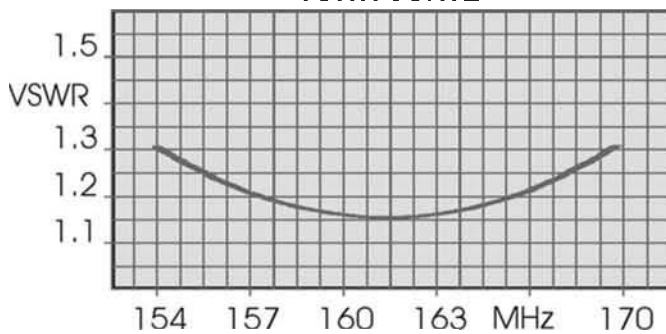
Heavy duty silver plated spring wound,
helical antenna for portable equipment.
Very high flexibility, wear resistant.

MAIN CHARACTERISTICS

Frequency range	: 157 - 167 MHz
Input impedance	: 50 ohm
V.S.W.R.	: < 1.5:1 according to CEPT T/R 2401
Maximum rated RF power	: 25 watt
Polarization	: Vertical
Gain	: > 2 dBd over 1/4 whip
Type of connection	: TNC male
Protection material	: Heat - shrinkable elastomeric tubing
Insulator material	: Polyethylene
Fatigue test	: Over 50.000 flexions
Net weight	: 55 g
Length	: 450 mm
Working temperature	: From -35° to +80°



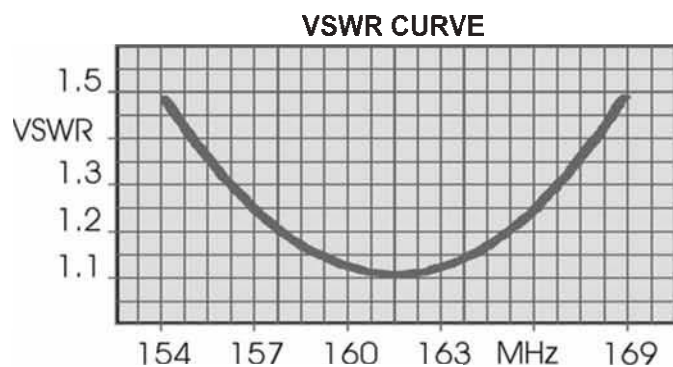
VSWR CURVE



Heavy duty silver plated spring wound,
helical antenna for portable equipment.
Very high flexibility, wear resistant.

MAIN CHARACTERISTICS

Frequency range	: 157 - 167 MHz
Input impedance	: 50 ohm
V.S.W.R.	: < 1.5:1 according to CEPT T/R 2401
Maximum rated RF power	: 25 watt
Polarization	: Vertical
Gain	: - 2 dBd over 1/4 whip
Type f connection	: TNC male
Protection material	: Heat - shrinkable elastomeric tubing
Insulator material	: Polyethylene
Fatigue test	: Over 50.000 flexions
Net weight	: 40 g
Length	: 175 mm
Working temperature	: From -35° to +80°



Heavy duty silver plated spring wound,
helical antenna for portable equipment.
Very high flexibility, wear resistant.

MAIN CHARACTERISTICS

Frequency range	: 164 - 174 MHz
Input impedance	: 50 ohm
V.S.W.R.	: < 1.5:1 according to CEPT T/R 2401
Maximum rated RF power	: 25 watt
Polarization	: Vertical
Gain	: - 2 dBd over 1/4 whip
Type f connection	: TNC male
Protection material	: Heat - shrinkable elastomeric tubing
Insulator material	: Polyethylene
Fatigue test	: Over 50.000 flexions
Net weight	: 40 g
Length	: 175 mm
Working temperature	: From -35° to +80°

